

Models Comparison



NG-6000 - Standard features, general purpose model with 3 USB ports.



NG-6050 - Based on the NG-6000 with serial and parallel ports for added compatibility.



NG-6052 - Based on the NG-6050, equipped with an integrated smart card for enhanced security.



NG-6400 - The advanced model with 3 USB ports. Enhanced performance and video capabilities.



NG-6450 - Based on the NG-6400 with serial and parallel ports for added compatibility.



NG-6452 - Based on the NG-6450, equipped with an integrated smart card for enhanced security.



NG-6500 - The advanced model equipped with VGA and DVI-D video ports. This provides enhanced display capabilities, including dual screen support.



NG-6552 - Based on the NG-6500, equipped with an integrated smart card for enhanced security.



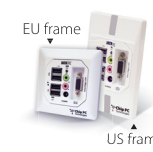
NG-6600 - This enhanced video memory model is equipped with double DVI-I video outputs. This provides enhanced display capabilities, including quad (4) and dual screen support.



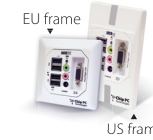
NG-6460 - Based on the NG-6450 model, equipped with a Fiber Optic Network Interface to enable work in a security tight environment.



NG-6462 - Based on the NG-6460 model, equipped with an integrated smart card for enhanced security.



EFI-6700 - Standard model with infrastructure LAN integration capability. This model has generous number of USB ports for improved connectivity and offers True Color display support. Owns built-in Power-over-Ethernet capability in addition to external powering.



EFI-6800 - Advanced model with infrastructure LAN integration capability. Offers improved processing, memory and video support capability. Owns built-in Power-over-Ethernet capability in addition to external powering.



EFI-6900 - The advanced Jack PC model equipped with DVI-I video ports. This provides enhanced display capabilities, including dual screen support

Model Name	CPU	Equiv. x86	Flash	RAM	Separate Video Memory	Video Output	Multi Screen Support	Port Number and Type			Audio Support	Max Resolution (Single Screen Configuration)	Management Software
								Parallel	Serial	USB			
NG-6000	Alchemy/RMI Au 1550, 333 MHz RISC	800 MHz	32MB DOC	64 MB DDR	4 MB	VGA (15-DB)	N	N	N	3	N	1280x1024 pixels, 16 M (24 bit) colors (True Color)	Xcalibur Global
NG-6050								1	1	3			
NG-6052								1	1	3			
NG-6400								N	N	3			
NG-6450								1	1	3			
NG-6452								1	1	3			
NG-6500								N	1	3			
NG-6552	Alchemy/RMI Au 1550, 500 MHz RISC	1.2 GHz	64MB DOC	128 MB DDR	8 MB	DVI-D + VGA (15-DB)	Dual Screen	N	1	3	Y	- 1280X1024 px, 16M (24bit) colors (True Color) - 1600X1200 px, 64K (16bit) Single screen options - 1280X1024 px, 16M (24bit) colors (True Color) - 1600X1200 px, 64K (16bit) Dual screen Up to 1024X768 px, 64K (16bit) colors	
NG-6600								N	N	4			
NG-6460	Alchemy/RMI Au 1550, 500 MHz RISC	1.2 GHz	64MB DOC	128 MB DDR	8 MB	VGA (15-DB)	N	1	1	3	Y	- 1280X1024 px, 16M (24bit) colors (True Color) - 1600X1200 px, 64K (16bit)	Xcalibur Global
NG-6462													
EFI-6700	Alchemy/RMI Au 1550, 333 MHz RISC	800 MHz	32MB DOC	64 MB DDR	4 MB	VGA (15-DB)	N	N	N	4	Y	1280x1024 pixels, 16 M (24 bit) colors (True Color) - 1280X1024 px, 16M (24bit) colors (True Color) - 1600X1200 px, 64K (16bit) Single screen options - 1280X1024 px, 16M (24bit) colors (True Color) - 1600X1200 px, 64K (16bit) Dual screen Up to 1024X768 px, 64K (16bit) colors	Xcalibur Global
EFI-6800													
EFI-6900													

Models Brief

NG-6000

Whenever a working environment requires an economical, connective, and plug-in savvy unit, the NG-6000 is your prime choice.

The NG-6000 seamlessly accommodates to a variety of server platforms with sufficient power behind its sessions to run most applications.

With its refined lines, compact size, the NG-6000 snugly blends into any working environment. Armed with Chip PC innovatively designed metal grip (optional), the NG-6000 easily anchors to any surface for tighter security.

EX-NG-6050

Carefully designed to handle multi-sessions, the NG-6050 is at ease with multi-server platforms, supports audio, and cost-effectively priced. This compact, smart looking, highly connective model, offers a good return on investment for any plug-in-savvy environment. As with other members of the NG family, the NG-6050 complements Chip PC management software to form a flexible and tightly secured network. Yet another security dimension is added with Chip PC innovatively designed metal grip (optional).

NG-6052



The NG-6052 is specially designed with highly connective, personal-security demanding, environment in mind. With its array of ports and improved means of authentication (PKI compatible) this clever model successfully combines between connectivity and tight personal security. Combined with Chip PC sophisticated, flexible, and secure,

management software, this compact model powers a company network to become security tailored down to the most particular user!

NG-6400

Aimed at enhanced display applications, the NG-6400 answers the challenge without stopping to be cost-effective, connective, and plug-in rich. It delivers all the above and remains attuned to different server platforms without loosing its power to run most applications.

Needles to say, the NG-6400 retains its family characteristics of nifty, and compact design, and easily blends into an enterprise working environment.

NG-6450

Alternating between enhanced and true color display options, the NG-6450 puts in more value for your money in the form of richer connectivity with its additional serial and parallel ports. This little unit retains the NG family virtues of adhering to different server platforms, plug-in savviness, smooth design, and easy desktop attachment. Together with Chip PC management software, this unit makes an excellent choice for any network requiring high connectivity.

NG-6452

Personal security without compromising enhanced connectivity and rich display options, wrapped up in a compactly designed shell— that is what the NG-6452 is all about!

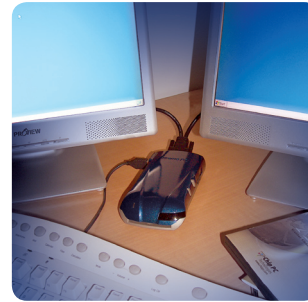
This unit offers the combination between the power to smoothly run most applications, PKI-compatible means of authentication, and flexibility. The NG-6452 successfully complements any enterprise network seeking security and powerful, versatile, features.

NG-6500

Offering a choice of versatile displays, rich connectivity, and audio support— this is the affordable NG-6500!

With its DVI-D and analog video outputs the NG-6500 is built to provide dual screen display and answer picky display requirements.

In addition, this compact, highly attachable unit, demonstrates the usual NG family features as power and smooth design.

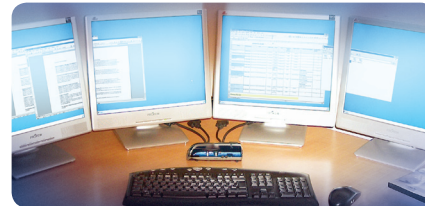


NG-6552

Highly accessible with its variety of ports, audio support, and dual, high-resolution screen display, the NG-6552 adds yet another dimension of security with its PKI-compatible means of authentication. The NG-6552, naturally, retains its family traits of smooth and compact design, while remaining powerful and easily attached to varied surfaces.

NG-6600

This extremely accessible unit has been thoroughly designed to answer stringent applications demanding high quality, multi-display. With its



ability to support up to quad display with non-compromising resolution, the NG-6600 has even more virtues to offer as power, compact build, and smooth, practical, design.

NG-6460

The NG-6460 offers a rewarding combination between high connectivity, single analog video output, and uncompromising corporate data security. The NG-6460 with its Fiber Optic Network Interface is the prime choice for tight security environment. It presents a prudent way of teaming together power, and security, all wrapped up in a compact, smoothly designed, unit.

NG-6462

This unit is unique in its emphasis on data security, both on personal and corporate levels. The NG-6462 with its PKI-compatible personal authentication method complements its data security on corporate level with its Fiber Optic Network Interface. Arrays of ports with smooth and compact design add up to exceptional connectivity and comfort operation. NG-6462 truly is the most effective solution for corporate secured work flow.



EFI-6700

Perfectly blending into the wall mains, this amazing, revolutionary unit, stuns with its novel features. This Power-over-Ethernet, LAN-integrated unit, with its multi-USB ports, and True color display, sets new standards for the PC world. Safely tucked in the wall, the EFI-6700 becomes the bridge between Smart Building and PC building technologies and sets an overwhelming challenge for any PC.



EFI-6800

From its wall niche, this super-compact unit, offers high connectivity, stronger processing power, and goes further with its enhanced display resolution. The EFI-6800 easily becomes part of any Smart Building integrating its Power-over-Ethernet, LAN-integration, into a high performance unit.

EFI-6900

With its wall residence, high connectivity, powerful processing ability, the EFI-6900 is a faithful member of the EFI product family. Yet, it is equipped with a single DVI-I video output supporting DVI-A/VGA and DVI-D allowing for dual screen support. EFI-6900 never compromises its Power-over-Ethernet, LAN-integration capabilities making it not only powerful, revolutionary model but also part and parcel of any Smart Building technology.



Chip PC HQ
Tel: +972 (4) 8501121
info@chippc.com

Chip PC USA
Tel: +1 (877) 9244772
info.us@chippc.com

Chip PC UK
Tel: +44 (870) 6061007
info@chippc.co.uk

Chip PC France
Tel: +33 (6) 98165163
info.fr@chippc.com

Chip PC Germany
Tel: +49 (201) 1850990
info@chippc.de

Chip PC Benelux
Tel: +31 (79) 7503729
info.nl@chippc.com

www.chippc.com Making IT a Complete Solution

